

GRADUATE SCHOOL

Biosphera

université
PARIS-SACLAY



Biology, Society, Ecology & Environment,
Resources, Agriculture & Food



The Graduate School Biosphera offers a research and education programme dedicated to the interactions between living organisms and their environments in order to address the issues related to the future of the biosphere and our societies.

Biosphera addresses these issues by integrating their social, economic and political dimensions. It mobilises a spectrum of research from fundamental research to translational research. Interdisciplinary, Biosphera interacts in particular with the Graduate Schools of 'Economics and Management', 'Geosciences, Climate, Environment and Planets', 'Life Sciences and Health', 'Sociology and Political Science' and 'Chemistry'.

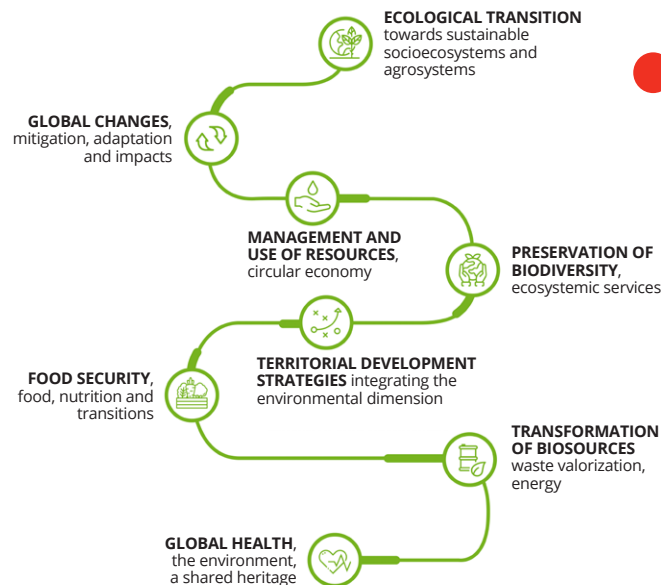
Institutions and interdisciplinary projects

Biosphera brings together 28 laboratories affiliated with Université Paris-Saclay, organised into scientific communities on various topics and long-term projects:

- **C-BASC** (Interdisciplinary project - Biodiversity, Agro-ecosystems, Society and Climate)
- **CLAND** (Convergence Institute on Climate Change and Land-Management Systems)
- **EUR-SPS** (Paris-Saclay Plant Sciences - University School of Research)
- **IDEAS** (Initiative for Design in Agrifood Systems)
- **IDEEV** (Institute for the Diversity, Ecology and Evolution of the Living World)
- **SayFood, PNCA & PSAE laboratories** in the fields of food science, nutrition and health
- **SAPS** (Animal Sciences Paris-Saclay Network)



Scientific challenges serving societal issues



Research teams and platforms

The research teams contributing to Biosphera's activities are involved in the course offer and in the proposed thematic programmes.

They host trainees and students of all levels, as well as doctoral candidates and post-doctoral fellows of all nationalities.

These teams are also in charge of experimental facilities (access to the directory of platforms the Plug in Labs Portal of Université Paris-Saclay). These scientific facilities of excellence are fully involved in research and training within Biosphera and provide services to public and private partners.

Within the framework of Université Paris-Saclay, the research teams and their platforms contribute to the interfaces with other higher education institutions, particularly in the field of Life Sciences for shared and open facilities.

KEY FIGURES

28 laboratories

100 research teams

1000 staff members

Over

40 platforms under direct steering



KEY FIGURES

42 M1 & M2 including 9 in 

4 doctoral schools
2 of which are mainly connected to Biosphera

550 master students

300 PhD candidates

6 Master's tracks

- **AETPF** (Agrosciences, Environment, Territory, Landscape, Forest)
- **BEE** (Biodiversity, Ecology, Evolution)
- **BIP** (Integrative Biology and Physiology)
- **EEET** (Environmental, Energy and Transport Economics)
- **GTDL** (Land Management and Community Development)
- **NSA** (Nutrition and Food Science)

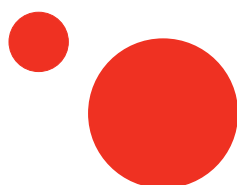
2 Doctoral Schools

- **ABIES** (Agriculture, Food, Biology, Environment, Health)
- **SEVE** (Plant Sciences: from Genes to Ecosystems)

Career Prospects

Professional insertion at Bac+5 and/or Bac+8

R&D researcher; R&D project manager in private or academic sector (engineer - doctorate); researcher or lecturer; quality manager; expert consultant or analyst in consulting firms, interprofessional organisations or national or international agencies or organisations; businessman etc.



8 Thematic programmes

Biosphera offers 8 thematic programmes associating different Master's degrees, Doctoral Schools and research teams. These programmes provide a key space for scientific and professional activities at the interface between research, education and innovation. They create connections between Master's and Doctoral levels.

- Animal sciences: from wild to domesticated animals
- Ecology & evolution
- Environmental sciences: economics, resources and impacts
- Food science and human nutrition
- Microorganisms: from genes to eco-systems
- Plant sciences: from wild to cultivated plants
- Sustainable circular bioeconomy
- Territories and societies: from natural environments to agroecosystems

Institutions & stakeholders



• **AgroParisTech** (Coordinator)



• **CNRS** (French National Centre for Scientific Research)



• **CEA** (French Alternative Energies and Atomic Energy Commission)



• **Faculté des Sciences d'Orsay** (Orsay Faculty of Sciences)



• **INRAE** (French National Research Institute for Agriculture, Food and Environment)



• **Université d'Évry Val d'Essonne**



• **Université de Versailles Saint-Quentin-en-Yvelines**



université
PARIS-SACLAY

GRADUATE SCHOOL

Biosphera

gs.biosphera@universite-paris-saclay.fr

<https://www.universite-paris-saclay.fr/gs-biosphera>

LinkedIn : <https://www.linkedin.com/in/graduate-school-biosphera-656910245/>

